
FIFTH GRADE

RHYTHM

The examiner will play twice a passage in duple or triple time. The candidate will then tap or clap the passage and state whether it is in duple or triple time.



The image contains six staves of musical notation. The first staff is in G major (one sharp) and 2/4 time, featuring a melody of eighth and quarter notes. The second staff is in D major (two sharps) and 2/4 time, with a similar melodic pattern. The third staff is in E major (three sharps) and 2/4 time. The fourth staff is in F major (no sharps or flats) and 2/4 time. The fifth staff is in C major (no sharps or flats) and 2/4 time. The sixth staff is in G major (one sharp) and 2/4 time, mirroring the first staff.

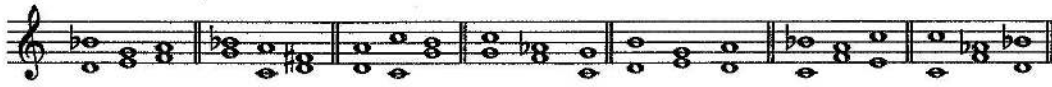
PITCH

The examiner, having sounded on the pianoforte a note to be regarded as a keynote of the scale, the candidate will hum or sing and afterwards name any interval of the major scale as played by the examiner immediately in succession to the keynote.

The image contains three staves of musical notation for a pitch exercise. Each staff begins with a single note (the keynote) followed by a sequence of notes representing intervals from the major scale. The first staff starts on C4 and shows intervals of a second, third, fourth, fifth, sixth, and seventh. The second staff starts on D4 and shows intervals of a second, third, fourth, fifth, sixth, and seventh. The third staff starts on E4 and shows intervals of a second, third, fourth, fifth, sixth, and seventh.

PITCH

To hum or sing from memory the higher or lower part of a two-part progression of three successive intervals within the limits of an octave from middle C played slowly by the examiner.



PITCH

The examiner having sounded any major or minor triad either in root position or an inversion played within the limits of an octave, the candidate will hum or sing all three notes, ascending or descending as required.

